



INSTRUCTION BULLETIN

No. 9013025
Machine: T17
Published: 09-2015
Rev. 00

NOTE: DO NOT DISCARD the Parts List from the Instruction Bulletin. Place the Parts List in the appropriate place in the machine manual for future reference. Retaining the Parts List will make it easier to reorder individual parts and will save the cost of ordering an entire kit.

NOTE: Numbers in parenthesis () are reference numbers for parts listed in Bill of Materials.

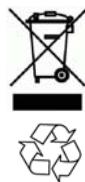
Installation instructions for **kit number 9020263, 9020264, 9020265**

SYNOPSIS:

This kit contains the parts needed to replace the rear wheels / rear wheel bearings on T17 scrubbers. Please follow step-by-step instructions.

SPECIAL TOOLS / CONSIDERATIONS: NONE

(Estimated time to complete: 1 hour)



PROTECT THE ENVIRONMENT

Please dispose of packaging materials, used machine components such as batteries and fluids in an environmentally safe way according to local waste disposal regulations.

Always remember to recycle.

PREPARATION:

1. Completely empty the solution and recovery tank. Refer to the Operator Manual for instruction how to empty both tanks.
2. Park the machine on a clean level surface, lower the scrub head, turn off the machine, set the parking brake, and remove the key.
3. Jack up the back end of the machine high enough to raise the rear wheel from the floor. Place jack stands under the machine frame and lower the machine onto the jack stands.

FOR SAFETY: Before leaving or servicing machine, stop on level surface, turn off machine, and remove key.

FOR SAFETY: When servicing machine, block machine tires before jacking machine up. Use a hoist or jack that will support the weight of the machine. Jack machine up at designated locations only. Support machine with jack stands.

INSTALLATION: (Kits 9020263 / 9020264)

1. Remove the rear wheel assembly from the machine. Discard the rear wheel, cup bearings, cone bearings, flat washer, slotted nut, cotter pin, and cap. (Fig. 1)
2. Apply grease onto the shaft of the brake drum assembly and both cone bearings (2). (Fig. 1)
3. Insert both cone bearings (2) into the wheel (6). (Fig. 1)
4. Install the wheel (7) onto the brake drum assembly. (Fig. 1)
5. Install the flat washer (3) onto the brake drum assembly. (Fig. 1)
6. Torque the slotted hex nut (4) onto the brake drum assembly. Torque the slotted hex nut to 11 ft. lbs. (14.91 Nm). (Fig. 1)
7. Use the cotter pin (5) to secure the slotted hex nut (4) into place on the brake drum assembly. (Fig. 1)
8. Install the dust cap (6) onto the wheel assembly. (Fig. 1)
9. Remove the jack stands from under the machine and lower the machine to the floor.

INSTALLATION: (Kit 9020265)

1. Remove the rear wheel assembly from the machine. Discard the flat washer, slotted nut, cotter pin, and cap. (Fig. 1)
2. Remove the cup bearings / cone bearings from the wheel. Set the wheel aside. Discard the cup bearings / cone bearings. (Fig. 1)
3. Use appropriate tools to carefully install both cup bearings (1) into the wheel. **DO NOT** damage the cup bearings when installing them into the wheel. (Fig. 1)
4. Apply grease onto the shaft of the brake drum assembly and both cone bearings (2). (Fig. 1)
5. Insert both cone bearings (2) into the wheel. (Fig. 1)
6. Install the wheel onto the brake drum assembly. (Fig. 1)
7. Install the flat washer (3) onto the brake drum assembly. (Fig. 1)
8. Torque the slotted hex nut (4) onto the brake drum assembly. Torque the slotted hex nut to 11 ft. lbs. (14.91 Nm). (Fig. 1)
9. Use the cotter pin (5) to secure the slotted hex nut (4) into place on the brake drum assembly. (Fig. 1)
10. Install the dust cap (6) onto the wheel assembly. (Fig. 1)
11. Remove the jack stands from under the machine and lower the machine to the floor.

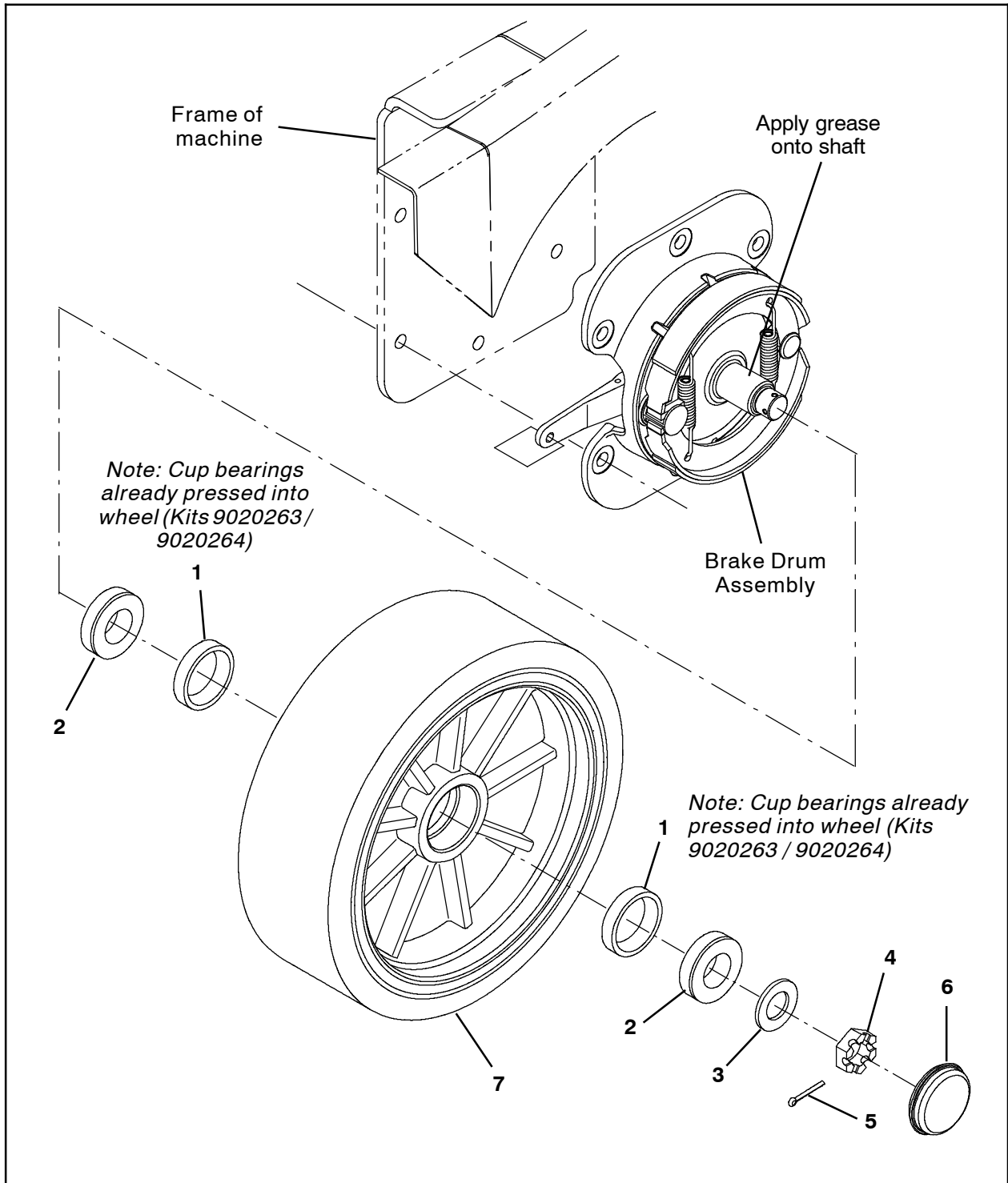


FIG. 1

Bill Of Materials For Tire Assy, Rear Std (1) [T17] - 9020263

Ref.	Tennant Part No.	Description	Qty.
2	51339	Bearing, Cone, 1.38b 0.71w	2
3	32969	Washer, Flat, 1.00, SAE	1
4	14242	Nut, Hex, Sltd, 1.00- 20	1
5	08202	Pin, Cotter, .125 X 1.75	1
6	54390	Cap, Hub, Dust, 2.57d 0.77l	1
7	1212112	Tire, Solid, 15.0 X 5.0, Poly, Std	1

Bill Of Materials For Tire Assy, Rear, High Traction (1) [T17] - 9020264

Ref.	Tennant Part No.	Description	Qty.
2	51339	Bearing, Cone, 1.38b 0.71w	2
3	32969	Washer, Flat, 1.00, SAE	1
4	14242	Nut, Hex, Sltd, 1.00- 20	1
5	08202	Pin, Cotter, .125 X 1.75	1
6	54390	Cap, Hub, Dust, 2.57d 0.77l	1
7	1208203	Tire, Solid, 15.0 X 5.0 [Hi- Traction]	1

Bill Of Materials For Wheel Bearing Kit, Rear, Afmkt [T17] - 9020265

Ref.	Tennant Part No.	Description	Qty.
1	51338	Bearing, Cup, 2.56d 0.55w	2
2	51339	Bearing, Cone, 1.38b 0.71w	2
3	32969	Washer, Flat, 1.00, SAE	1
4	14242	Nut, Hex, Sltd, 1.00- 20	1
5	08202	Pin, Cotter, .125 X 1.75	1
6	54390	Cap, Hub, Dust, 2.57d 0.77l	1

TENNANT COMPANY
P. O. Box 1452
Minneapolis, MN 55440-1452